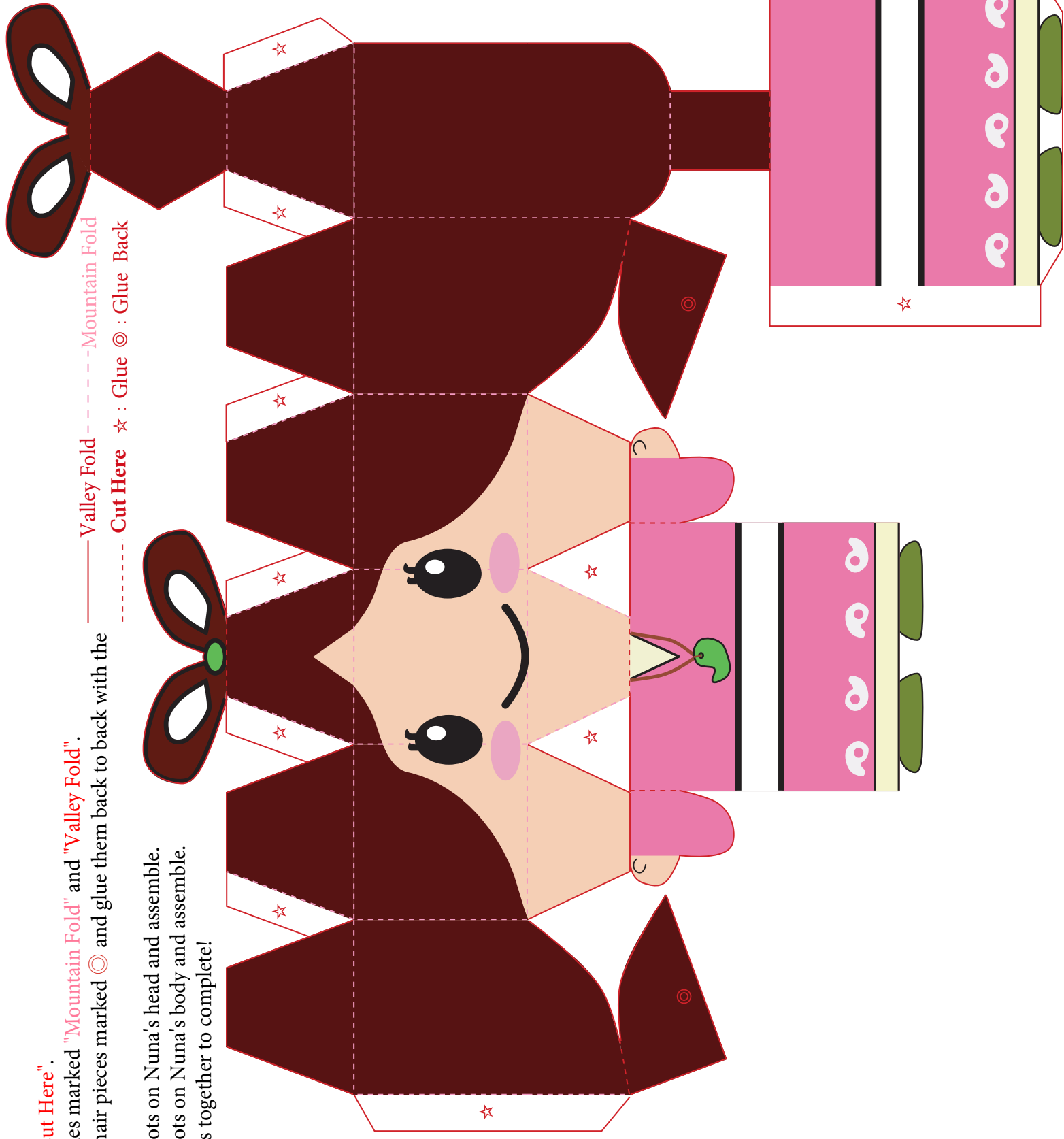
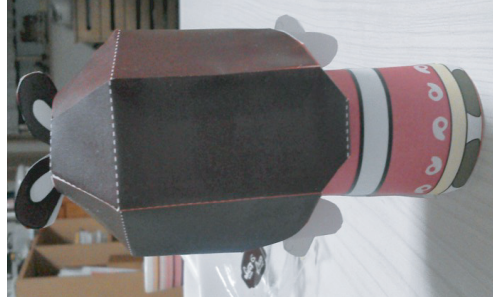
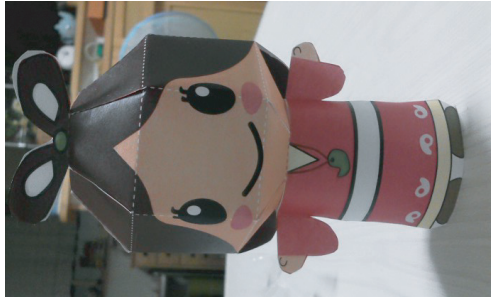


Nuna Paper Craft

- (1) Cut along the lines marked "Cut Here".
- (2) Fold as indicated along the lines marked "Mountain Fold" and "Valley Fold".
- (3) Apply glue to the back of the hair pieces marked ☉ and glue them back to back with the adjacent hair piece.
- (4) Apply glue to the indicated spots on Nuna's head and assemble.
- (5) Apply glue to the indicated spots on Nuna's body and assemble.
- (6) Glue Nuna's two hair topknots together to complete!



—— Valley Fold
 - - - - Mountain Fold
 ····· Cut Here ☆ : Glue ☉ : Glue Back